

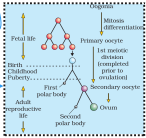
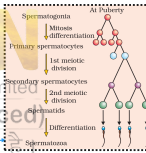
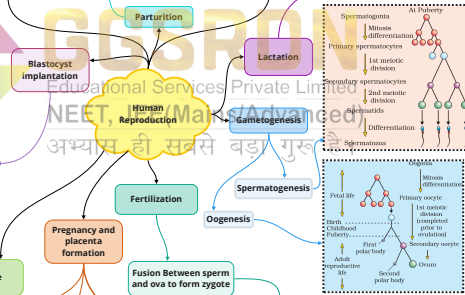
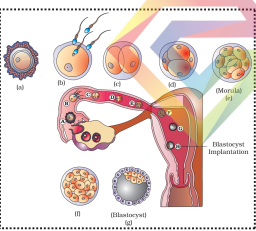
Spermatogonia, Sertoli cells and Leydig cells
 Consist of
 Seminiferous tubules
 is made of
Testes

Rete testis, vasa efferentia, Epididymis & Vas deferens
Seminal vesicle, prostate, Bulbourethral gland
External Genitalia
External Ducts
External glands

Mammary lobes
Mammary duct
Lactiferous duct
Mammary Glands
External Genitalia

Infundibulum
Ampulla
Isthmus
Mons pubis
Labia majora
Labia minor
Hymen
Clitoris
Oviduct
Vagina
Uterus
Accessory Ducts
Cortex
Medulla
Ovarian Stroma
Ovaries
Ovarian Stroma

Male Reproductive System
Female Reproductive System
Process of giving birth to young ones after gestation period
Production of milk towards the end of pregnancy



Mestrual cycle

hPL
hCG
Estrogen
Progesterone

