

**Ammonotelism**  
 Excretory product is ammonia  
 Example- bony fishes, aquatic amphibians and insects

**Ureotelism**  
 Excretory product is Urea  
 Example- mammals, Terrestrial Amphibians

**Uricotelism**  
 Excretory product is uric acid  
 Example- Birds

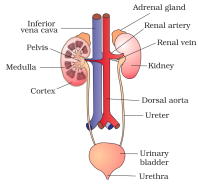
**Disorders of the excretory System**  
 Uremia  
 Renal failure  
 Renal Calculi  
 Glomerulonephritis

**Micturition**  
 The process of expulsion of urine from urinary bladder

**Function of the Tubules**  
 PCT 70% of electrolytes are reabsorbed  
 Henle's Loop Maintains high osmolarity of medullary fluid  
 DCT Conditional reabsorption of Na<sup>+</sup> and water  
 Collecting Duct Large amount of water is reabsorbed to produce concentrated urine

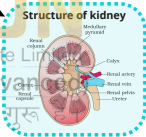
**Regulation of kidney**  
 By ADH (Vasopressin)  
 By Juxtaglomerular Apparatus (Renin-Angiotensin mechanism)  
 By ANF (in heart)

**Modes of Excretion**



**Urine Formation**  
 Glomerular filtration  
 Tubular reabsorption  
 Tubular secretion

**Human Excretory System**  
 A Pair of Kidneys  
 Ureter  
 Urinary Bladder  
 Urethra



**Excretory Products and their Elimination**

**Other organs in excretion**  
 Liver  
 Lungs  
 Skin

**Counter-current mechanism**  
 Henle's loop  
 Vasa rectae

